



DESIGN
LINE



UNIQUE.
NATURAL.
INDIVIDUAL.



WHEN CLASSIC PARQUET PATTERNS MEET ORGANIC SHAPES, THEY CREATE EXPRESSIVE AREAS THAT CRAFT ARTFUL SPACES.

Glan-Park® DESIGNLINE offers a wide range of possibilities to uniquely customize your space. Various plank shapes, surfaces and colors, combined according to your personal preferences, allow for truly distinctive spatial designs. To perfectly align with your spatial concept, planks can be supplied in different widths and lengths. Specific requirements regarding shape and surface design can be accommodated at any time, thanks to our state-of-the-art production line.

In designing the installation layouts, we have ensured that each plank format can be paired with another in all directions. This means that a pattern can infinitely extend in any direction.

All parquet planks and tiles are available in thicknesses of 13, 16, and 18 mm, featuring a wear layer of 4 mm or 6 mm. The gracefully curved outer contour is highlighted by a surrounding bevel of approximately 2 mm, resulting in a serene, naturally undulating seam in the installation pattern. Depending on the surface texture, varying incidents of light produce a different interplay of colors.

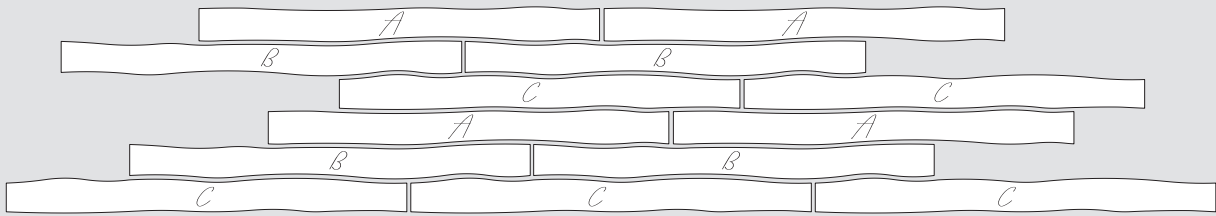
The processed oak wood primarily originates from Germany and France and is manufactured in four distinct grades at our factory in Dömitz, Germany.

We would be happy to work with you to develop an exclusive concept for your rooms.



CASTLELINE

180 | 220 | 260



MERGING THE CLASSIC COUNTRY HOUSE PLANK WITH FLUID FORMS, CREATING A DISTINCTLY ARTISTIC INTERPRETATION OF MOTION AND AESTHETICS.

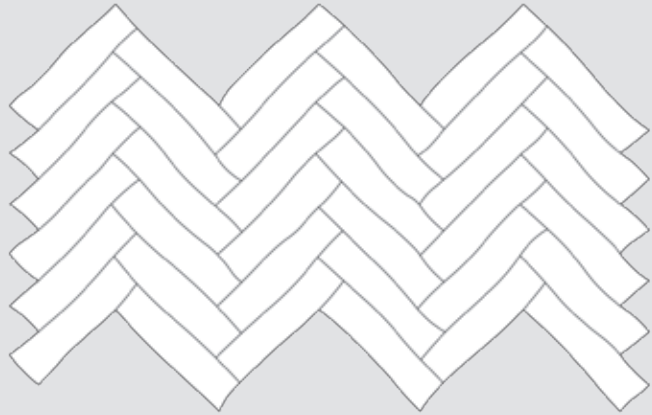
This remarkable parquet pattern with undulating outer edges is the perfect choice for spaces that crave a touch of creativity and individuality. It imparts a unique allure to both residential and commercial areas. The wavelike design of the parquet establishes a harmonious atmosphere and conveys a sense of dynamism and vitality.

Castleline is available in widths of 180 mm, 220 mm, and 260 mm, which can also be installed in a mixed arrangement. A pattern field consists of three differently shaped planks, all of the same length. The length of each individual plank measures 2350 mm.





FISHLINE



CLASSIC INSTALLATION PATTERN MEETS FLUID LINES,
LENDING THE FLOOR A SOFT, NATURAL AESTHETIC AND CREATING
A UNIQUE FOCAL POINT IN ANY ROOM.

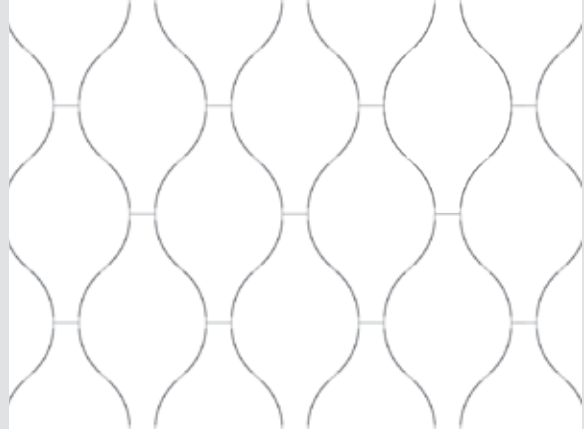
The curved outer edges bestow this herringbone parquet with a gentle, curvaceous form that adds a touch of elegance and dynamism to the floor. This results in a seamless transition from the linear structure of the classic herringbone pattern to a continuous overall surface, serving as a visual standout.

Our standard dimension per plank averages at 185 x 700 mm. Further sizes can be crafted upon request, as long as they do not deviate from the standard dimensions.





SPINDLE



WITH THIS GEOMETRIC PARQUET PATTERN, ROOMS OF EXCEPTIONAL ELEGANCE AND REFINEMENT ARE CRAFTED, SUITED TO BOTH TRADITIONAL AND MODERN INTERIOR STYLES.

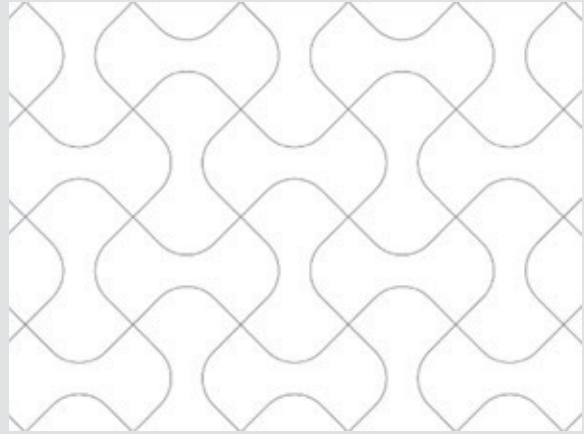
The beauty of the Spindle pattern lies in its versatility. Alongside its expressive form, various colors can be combined for individual floor designs.

The Spindle parquet tiles are available in the size of 205 mm x 350 mm.





SANDCLOCK



DISCOVER THE UNIQUENESS OF PARQUET TILES SHAPED LIKE AN SANDCLOCK AND TRANSFORM YOUR SPACE INTO A TRUE MASTERPIECE.

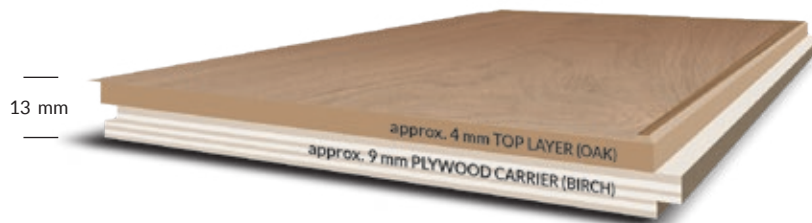
The distinctive form of the Sandclock parquet tiles allows for especially creative room designs. The pattern can be installed in a straight or diagonal arrangement to lend a personalized touch to the space. The tiles can be chosen in various colors to complement your personal style and interior preferences.

Each sandclock parquet tile has a size of 245 mm x 418 mm.



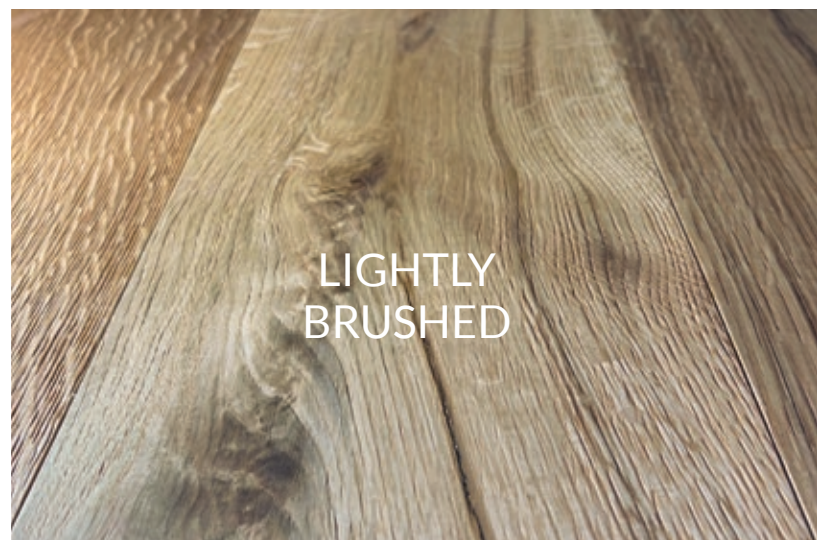
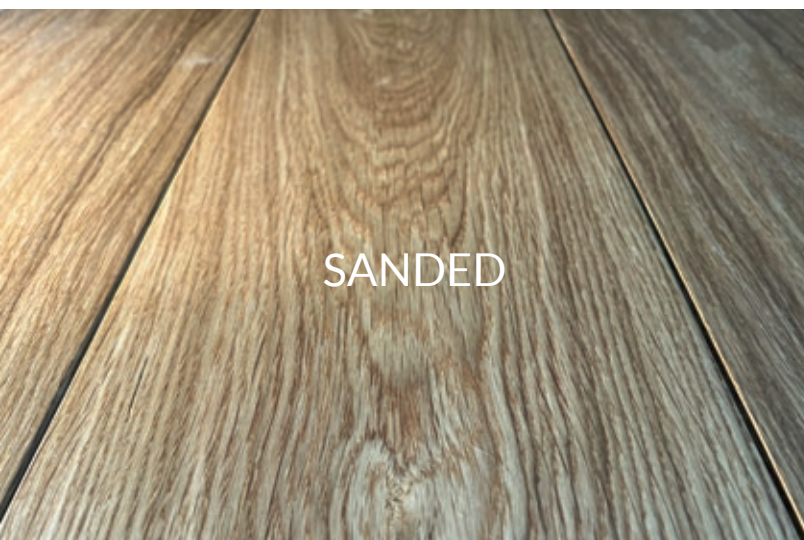
CONSTRUCTION + INSTALLATION

The plank construction of the 2-layer parquet measures 13, 16, or 18 mm, featuring a wear layer of 4 mm or 6 mm. The gracefully curved outer contour is highlighted by a surrounding bevel of approximately 2 mm, resulting in a serene, naturally undulating seam in the installation pattern. Depending on the surface and grade, varying incidences of light create a different interplay of colors.



PARQUET SURFACES

The refreshing vibrancy of the parquet is derived from the surface you choose. Due to this, not only does the appearance of the floor vary, but also the sensation that accompanies each step. The specific character is formed via brushing with wire or nylon brushes. This process highlights and emphasizes the grain of individual wood. The individual treatment makes each plank a distinctive piece.



PARQUET GRADINGS

The wood in the elegant grade must be free from knots*, sapwood, and cracks on the top surface. No significant variations in color and texture are permitted. The pieces are processed with both plain and quarter sawn cuts. *Knots with minimal dimensions are occasionally allowed.

The natural grade features a top surface free from sapwood and cracks. Small, healthy knots as well as natural color variations are allowed. Slightly larger knots may occur in plank floors.

A close-up photograph of elegant grade parquet flooring. The wood is a light tan color with a smooth, uniform texture and grain. The planks are arranged in a vertical pattern, showing a consistent color and grain throughout.

ELEGANT

A close-up photograph of natural grade parquet flooring. The wood is a light tan color with a more varied texture and grain than the elegant grade. There are several dark knots and some minor color variations visible across the planks, which are arranged in a vertical pattern.

NATURAL

Each grade of **Glan-Park® DESIGNLINE**-parquet has its own distinct character and determines the overall effect. Depending on the presence of knots, sapwood and color differences, the floor can appear from calm and elegant to lively and rustic.



The markant grade arises from the noticeable wood grain, knots, and vibrant texture. The knots must be solid. Some sapwood and healthy knots are allowed. Occasional cracks may be present

The character of the rustic grade is defined by a highly dynamic structure. Small cracks as well as sapwood and knot holes are explicitly allowed.

A close-up photograph of a wood surface with a prominent, wavy grain and several dark, solid knots. The wood has a warm, light brown tone.

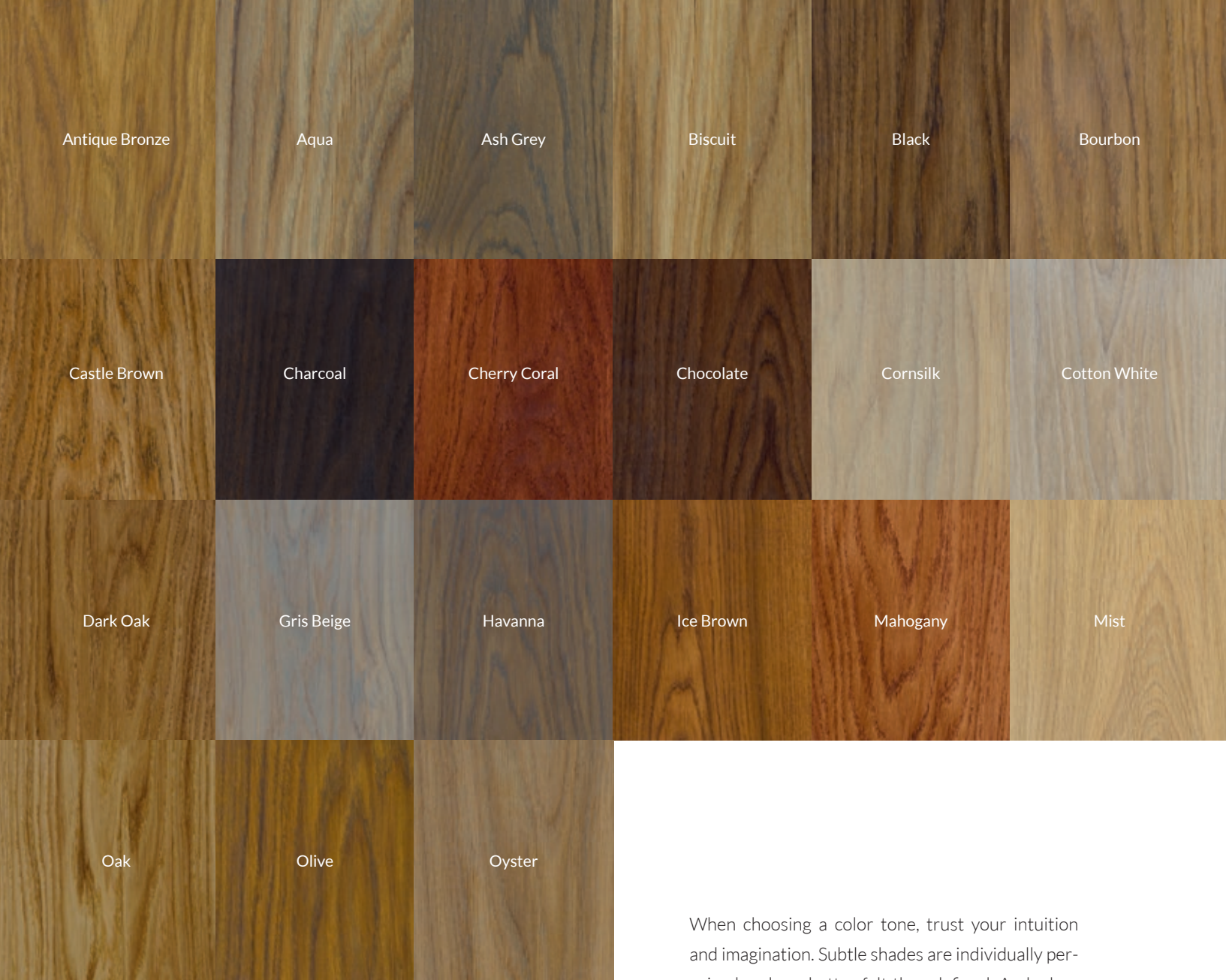
MARKANT

A close-up photograph of a wood surface with a more irregular, dynamic grain pattern, including some smaller knots and subtle variations in color and texture.

RUSTIC

FORTY TWO COLOURS





When choosing a color tone, trust your intuition and imagination. Subtle shades are individually perceived and are better felt than defined. And a hue that will encompass and accompany you across many years on a significant surface should harmonize with your décor and style as much as it does with your personal taste. With over forty standard colors available for **Glan-Park® DESIGNLINE**, you have a wide range of choices.



Rubio® MONOCOAT



The displayed color tones are applied to oak wood. They are indicative and not binding.







PARQUET MANUFACTURY

Auf den Blöcken 12 · 21337 Lüneburg · Germany
T +49 (0)4131 927 69 99 · **F** +49 (0)4131 927 69 98
M info@glanpark.de · www.glanpark.de
[f](https://www.facebook.com/glanpark.parkett) @glanpark.parkett · [i](https://www.instagram.com/glanpark_parkett) @glanpark_parkett